



- ¹ Institute of Horticulture, Viticulture and Oenology (IHVO). 6 Marshal Gelovani Ave. 0159. Tbilisi. Georgia.
- ² Dipartimento di Produzione Vegetale (DIPROVE), Università degli studi di Milano. Via Celoria 2. 20133. Milan. Italy.
- ³ Regional Office for Europe, International Plant Genetic Resources Institute (IPGRI), Via Tre Denari 472/a, 00057. Maccarese. Rome. It.
- ⁴ Institute of Viticulture and Wine-making, Mekhtilabad vil. Absheron. 0100. Baku. Azerbaijan.
- ⁵ National Institute for Vine and Wine "Magarach". 31 Kirov St. 98600. Yalta. Crimea. Ukraine.
- ⁶ Bioarchaeological Research Centre, National Museum of Oriental Art (ISIAO). Via Merulana 248. 00185. Rome. Italy.
- ⁷ National Institute for Viticulture and Oenology. 128 Grenoble str. 2019. Chisinau. Moldova.
- ⁸ Centre de Recherche Public - Gabriel Lippmann (CRP-GL). 41 rue du Brill. L-4422 BELVAUX. Luxembourg.
- ⁹ Academy of Viticulture, Wine-making and Fruit-growing. Pushkin st. 33/10. 375002. Yerevan. Armenia.
- ¹⁰ Federal Centre for Breeding Research on Cultivated Plants, BAZ. 76833. Siebeldingen. Germany.
- ¹¹ Krymskii Experimental Breeding Station of VIR. Krasnodarskii Krai. Krymsk-4. Russian Federation.
- ¹² Kuban State Agrarian University. Kalinin 13. 350044. Krasnodar. Russian Federation.



Azerbaijan
Armenia
Georgia
Moldova
Russia
Ukraine



Centre de Recherche Public Gabriel
Lippmann in Luxembourg.

UNIVERSITÀ DEGLI STUDI DI MILANO

L'Istituto Italiano per l'Africa e l'Oriente (IsIAO)

Partnership

European Cooperative Program for Crop Genetic Resources Networks (ECP/GR)

Working Group on *Vitis*

AIM is **identifying, collecting, characterizing** and **conserving** the grapevine diversity throughout the region, as a basis to improve local viticulture and wine making.

On the basis of inventory of local varieties in 13 collections of the region a joint database has been established with **2523** accessions, represented **1563** varieties & clones.

A	B	C	D	E	F	G	H
BIBLIOTHÈRE OF LICAL VARIETIES, 2014							
	Genre, species	Starting name	Variety name	Possible synonyms	Entry color	Location of the collection	Location of the collection
					Start of 1st part	County	Year of collection
2063	var. <i>alba</i>	ALBA	ALBA	ALBA	ALBA	ALBA	ALBA
2064	var. <i>alba</i>	ALBA	ALBA	ALBA	ALBA	ALBA	ALBA
2065	var. <i>alba</i>	ALBA	ALBA	ALBA	ALBA	ALBA	ALBA
2066	var. <i>alba</i>	ALBA	ALBA	ALBA	ALBA	ALBA	ALBA
2067	var. <i>alba</i>	ALBA	ALBA	ALBA	ALBA	ALBA	ALBA
2068	var. <i>alba</i>	ALBA	ALBA	ALBA	ALBA	ALBA	ALBA
2069	var. <i>alba</i>	ALBA	ALBA	ALBA	ALBA	ALBA	ALBA
2070	var. <i>alba</i>	ALBA	ALBA	ALBA	ALBA	ALBA	ALBA
2071	var. <i>alba</i>	ALBA	ALBA	ALBA	ALBA	ALBA	ALBA
2072	var. <i>alba</i>	ALBA	ALBA	ALBA	ALBA	ALBA	ALBA
2073	var. <i>alba</i>	ALBA	ALBA	ALBA	ALBA	ALBA	ALBA
2074	var. <i>alba</i>	ALBA	ALBA	ALBA	ALBA	ALBA	ALBA
2075	var. <i>alba</i>	ALBA	ALBA	ALBA	ALBA	ALBA	ALBA
2076	var. <i>alba</i>	ALBA	ALBA	ALBA	ALBA	ALBA	ALBA
2077	var. <i>alba</i>	ALBA	ALBA	ALBA	ALBA	ALBA	ALBA
2078	var. <i>alba</i>	ALBA	ALBA	ALBA	ALBA	ALBA	ALBA
2079	var. <i>alba</i>	ALBA	ALBA	ALBA	ALBA	ALBA	ALBA
2080	var. <i>alba</i>	ALBA	ALBA	ALBA	ALBA	ALBA	ALBA
2081	var. <i>alba</i>	ALBA	ALBA	ALBA	ALBA	ALBA	ALBA
2082	var. <i>alba</i>	ALBA	ALBA	ALBA	ALBA	ALBA	ALBA
2083	var. <i>alba</i>	ALBA	ALBA	ALBA	ALBA	ALBA	ALBA
2084	var. <i>alba</i>	ALBA	ALBA	ALBA	ALBA	ALBA	ALBA
2085	var. <i>alba</i>	ALBA	ALBA	ALBA	ALBA	ALBA	ALBA
2086	var. <i>alba</i>	ALBA	ALBA	ALBA	ALBA	ALBA	ALBA
2087	var. <i>alba</i>	ALBA	ALBA	ALBA	ALBA	ALBA	ALBA
2088	var. <i>alba</i>	ALBA	ALBA	ALBA	ALBA	ALBA	ALBA
2089	var. <i>alba</i>	ALBA	ALBA	ALBA	ALBA	ALBA	ALBA
2090	var. <i>alba</i>	ALBA	ALBA	ALBA	ALBA	ALBA	ALBA
2091	var. <i>alba</i>	ALBA	ALBA	ALBA	ALBA	ALBA	ALBA
2092	var. <i>alba</i>	ALBA	ALBA	ALBA	ALBA	ALBA	ALBA
2093	var. <i>alba</i>	ALBA	ALBA	ALBA	ALBA	ALBA	ALBA
2094	var. <i>alba</i>	ALBA	ALBA	ALBA	ALBA	ALBA	ALBA
2095	var. <i>alba</i>	ALBA	ALBA	ALBA	ALBA	ALBA	ALBA
2096	var. <i>alba</i>	ALBA	ALBA	ALBA	ALBA	ALBA	ALBA
2097	var. <i>alba</i>	ALBA	ALBA	ALBA	ALBA	ALBA	ALBA
2098	var. <i>alba</i>	ALBA	ALBA	ALBA	ALBA	ALBA	ALBA
2099	var. <i>alba</i>	ALBA	ALBA	ALBA	ALBA	ALBA	ALBA
2100	var. <i>alba</i>	ALBA	ALBA	ALBA	ALBA	ALBA	ALBA

24 previously recovered varieties have been identified and 19 varieties were discovered by "Magarach". Armenia and Azerb. described rare variety inside the countries.

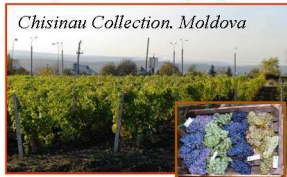


- Georgia re-introduced more than 100 cvs. from Moldova, Ukraine and Italy
- Armenia - 80 varieties & clones of these varieties from its five regions
- Azerbaijan – inside the country and 7 varieties from Moldova
- Russia - from its inner regions and from “Magarach” collection

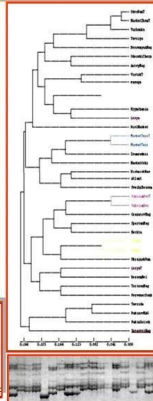
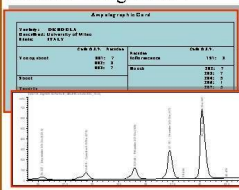
2 new collections
of local varieties
were established:
Vashlijvari - 350
Ararat - 200 cvs.

Anapa collection (Russia) was enlarged with new cultivars.

Azerbaijan made new plantation in **Gyanja** and **Shamakhy** experim. stations and used “on-farm” preservation on 2 private farms for **18-32** varieties.

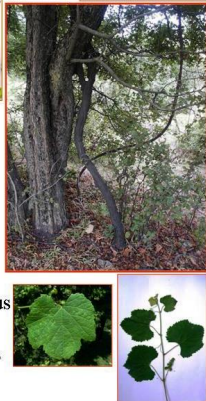


Each country carries out according to ampelographic descriptors with photos and agronomic traits. SSR fingerprinting and HPLC techniques are used in DIPROVE, CRP-GL and "Magarach".



The inventory was carried out by organization of expeditions in each country (2005) and a large number of wild populations have been discovered:

- ✓ Ukraine - **163** forms in Crimea
- ✓ Georgian - **66** in East Georgia
- ✓ Russia - **57** in the North Caucasus
- ✓ Azerbaijan has wide research
- ✓ Moldova studied in spontaneous conditions and in the collection.



2003
Tbilisi (GEO)

2004
Yalta (UKR)

2005
Chisinau (MLD)



Three 'Vitis Fellowship' has been realized for researchers from GEO, RUS and UKR in the CRP-GL in and in the DIPROVE.

The Project facilitates development of a molecular lab at the "Magarach" inst.

LA VITE E L'UOMO
DAL NEOLITICO ALLE ORIGINI
DEL VINIFICAZIONE NELLE MARCHE

gshob
გაბიჭყალაფრუგის
(Vitis spp.)

International Plant Genetic Resources Institute (IPGRI)
Conservation of Plant Genetic Resources in the Mountains and Southern Black Sea Region of Georgia

Development of National Program on Plant Genetic Resources
Conservation of Plant Genetic Resources in the Mountains and Southern Black Sea Region of Georgia

IPGRI

Conservation of Plant Genetic Resources in the Mountains and Southern Black Sea Region of Georgia

Conservation of Plant Genetic Resources in the Mountains and Southern Black Sea Region of Georgia

Web-IPGRI for the project:
http://www.ipgri.cgiar.org/regions/europe/PGRinSEE/PGR_SE_Europe.htm

Information also at contact:
Dr **D. Maghradze**, project facilitator
E-mail: d_maghradze@geo.net.ge



Diversity



Project facilitates research within the region



9th International Conference on **Grape Genetics and Breeding**
Udine, Italy 2-6 July, 2006

